



Test Report

No.: CTL1807316011-R

Date: Aug. 06, 2018

Page 1 of 10

Applicant: USU019

Address: China

Manufacturer: USU019

Address:

Sample Name: Powerbank

Model No: T1041

Trade Mark: SPECTECH

Test period: Aug. 02, 2018 to Aug. 06, 2018

Test requested: RoHS Directive 2011/65/EU Annex II

Test Method: IEC 62321-7-2:2017method: Regulated Substances Content of test process with Electrical & Electronic Products

- (1)With reference to IEC 62321-5:2013, determination of Cadmium by ICP-OES.
- (2)With reference to IEC 62321-5:2013, determination of Lead by ICP-OES.
- (3)With reference to IEC 62321-4:2013, determination of Mercury by ICP-OES.
- (4)With reference to IEC 62321-7-2:2017, determination of Hexavalent Chromium by Colorimetric Method using UV-Vis.
- (5)With reference to IEC 62321-6:2015, determination of PBBs and PBDEs by GC-MS. .

Written by:

Lylcan Cai

Approved by:



Shenzhen CTL Testing Technology Co., Ltd.

Floor 1-A, Baisha Technology Park, No.3011, Shahexi Road, Nanshan District, Shenzhen, China 518055

Tel: +86-755-89486194 E-Mail: ctl@ctl-lab.com

Test Report

No.: CTL1807316011-R

Date: Aug. 06, 2018

Page 2 of 10

Test Results:

Part No.	Part Name	Restricted Substances	Unit	Results	Reference report No.
1	Plastic shell	Cd	mg/kg	N.D.	SGS Report No.: CANEC1425554
		Pb	mg/kg	N.D.	
		Hg	mg/kg	N.D.	
		Cr ⁶⁺	mg/kg	N.D.	
		PBBs	mg/kg	N.D.	
		PBDEs	mg/kg	N.D.	
2	PCB	Cd	mg/kg	N.D.	SGS Report No.: CE/2015/045249
		Pb	mg/kg	N.D.	
		Hg	mg/kg	N.D.	
		Cr ⁶⁺	mg/kg	N.D.	
		PBBs	mg/kg	N.D.	
		PBDEs	mg/kg	N.D.	
3	USB interface	Cd	mg/kg	N.D.	SGS Report No.: CANEC1754250
		Pb	mg/kg	N.D.	
		Hg	mg/kg	N.D.	
		Cr ⁶⁺	mg/kg	N.D.	
		PBBs	mg/kg	N.D.	
		PBDEs	mg/kg	N.D.	
4	Battery	Cd	mg/kg	N.D.	SGS Report No.: CE/2015/724720
		Pb	mg/kg	N.D.	
		Hg	mg/kg	N.D.	
		Cr ⁶⁺	mg/kg	N.D.	
		PBBs	mg/kg	N.D.	
		PBDEs	mg/kg	N.D.	
5	Capacitance	Cd	mg/kg	N.D.	SGS Report No.: CANEC1542243
		Pb	mg/kg	N.D.	
		Hg	mg/kg	N.D.	
		Cr ⁶⁺	mg/kg	N.D.	
		PBBs	mg/kg	N.D.	
		PBDEs	mg/kg	N.D.	

Shenzhen CTL Testing Technology Co., Ltd.

Floor 1-A, Baisha Technology Park, No.3011, Shahexi Road, Nanshan District, Shenzhen, China 518055

Tel: +86-755-89486194 E-Mail: ctl@ctl-lab.com

Test Report

No.: CTL1807316011-R

Date: Aug. 06, 2018

Page 3 of 10

6	Resistance	Cd	mg/kg	N.D.	SGS Report No.: CE/2015/05225
		Pb	mg/kg	N.D.	
		Hg	mg/kg	N.D.	
		Cr ⁶⁺	mg/kg	N.D.	
		PBBs	mg/kg	N.D.	
		PBDEs	mg/kg	N.D.	
7	Inductance	Cd	mg/kg	N.D.	SGS Report No.: CANEC15542420
		Pb	mg/kg	N.D.	
		Hg	mg/kg	N.D.	
		Cr ⁶⁺	mg/kg	N.D.	
		PBBs	mg/kg	N.D.	
		PBDEs	mg/kg	N.D.	
8	Chip	Cd	mg/kg	N.D.	SGS Report No.: CE/2015/02245
		Pb	mg/kg	N.D.	
		Hg	mg/kg	N.D.	
		Cr ⁶⁺	mg/kg	N.D.	
		PBBs	mg/kg	N.D.	
		PBDEs	mg/kg	N.D.	
9	Power cable	Cd	mg/kg	N.D.	SGS Report No.: CE/2015/077522452
		Pb	mg/kg	N.D.	
		Hg	mg/kg	N.D.	
		Cr ⁶⁺	mg/kg	N.D.	
		PBBs	mg/kg	N.D.	
		PBDEs	mg/kg	N.D.	
10	Switch key	Cd	mg/kg	N.D.	SGS Report No.: CANEC1507722480
		Pb	mg/kg	N.D.	
		Hg	mg/kg	N.D.	
		Cr ⁶⁺	mg/kg	N.D.	
		PBBs	mg/kg	N.D.	
		PBDEs	mg/kg	N.D.	
11	Soldering tin	Cd	mg/kg	N.D.	SGS Report No.: CANEC1542580
		Pb	mg/kg	N.D.	
		Hg	mg/kg	N.D.	
		Cr ⁶⁺	mg/kg	N.D.	
		PBBs	mg/kg	N.D.	
		PBDEs	mg/kg	N.D.	

Test Report

No.: CTL1807316011-R

Date: Aug. 06, 2018

Page 4 of 10

12	Type c interface	Cd	mg/kg	N.D.	SGS Report No.: CE/2015/05727755
		Pb	mg/kg	N.D.	
		Hg	mg/kg	N.D.	
		Cr ⁶⁺	mg/kg	N.D.	
		PBBs	mg/kg	N.D.	
		PBDEs	mg/kg	N.D.	
13	Triode	Cd	mg/kg	N.D.	SGS Report No.: CANEC1522720
		Pb	mg/kg	N.D.	
		Hg	mg/kg	N.D.	
		Cr ⁶⁺	mg/kg	N.D.	
		PBBs	mg/kg	N.D.	
		PBDEs	mg/kg	N.D.	
14	LED	Cd	mg/kg	N.D.	SGS Report No.: CE/2015/057272
		Pb	mg/kg	N.D.	
		Hg	mg/kg	N.D.	
		Cr ⁶⁺	mg/kg	N.D.	
		PBBs	mg/kg	N.D.	
		PBDEs	mg/kg	N.D.	
15	Coil	Cd	mg/kg	N.D.	SGS Report No.: CE/2015/053272
		Pb	mg/kg	N.D.	
		Hg	mg/kg	N.D.	
		Cr ⁶⁺	mg/kg	N.D.	
		PBBs	mg/kg	N.D.	
		PBDEs	mg/kg	N.D.	

Test Report

No.: CTL1807316011-R

Date: Aug. 06, 2018

Page 5 of 10

ROHS Requirement

Restricted substances	MDL	Limits
Lead(Pb)	5	0.1%(1000 ppm)
Cadmium(Cd)	5	0.01%(100 ppm)
Chromium(VI)(Cr6+)	5	0.1%(1000 ppm)
Mercury(Hg)	5	0.1%(1000 ppm)
Polybrominated biphenyls(PBBs)	5	0.1%(1000 ppm)
Polybrominated diphenyl ethers(PBDEs)	5	0.1%(1000 ppm)

Note:

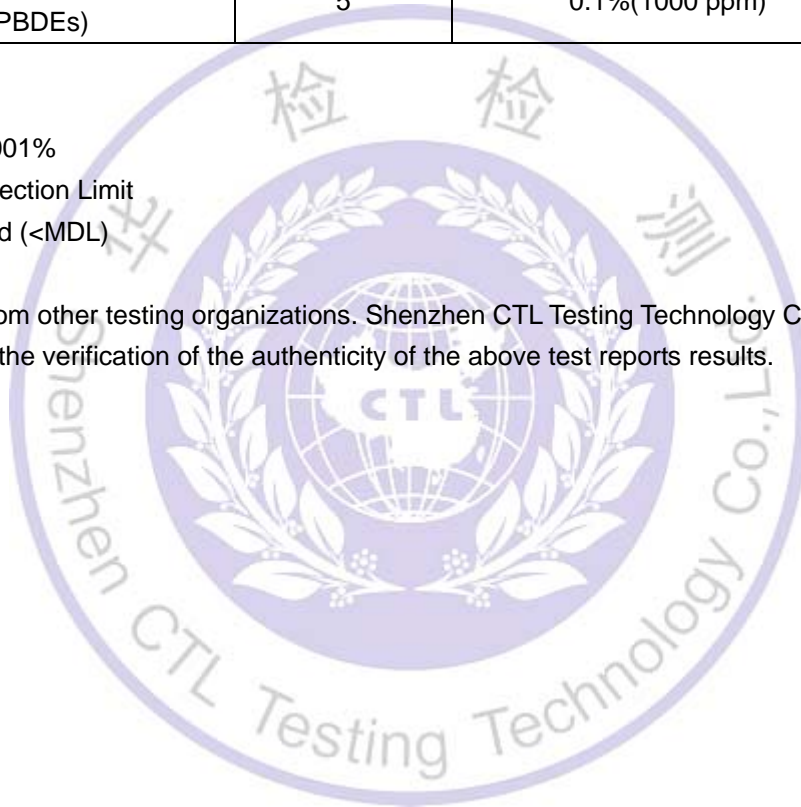
_mg/kg=ppm=0.0001%

-MDL=Method Detection Limit

-N.D. =not detected (<MDL)

-Photo is included

-Test results are from other testing organizations. Shenzhen CTL Testing Technology Co., Ltd. has no liability to assume the verification of the authenticity of the above test reports results.



Shenzhen CTL Testing Technology Co., Ltd.

Floor 1-A, Baisha Technology Park, No.3011, Shahexi Road, Nanshan District, Shenzhen, China 518055

Tel: +86-755-89486194 E-Mail: ctl@ctl-lab.com

Test Report

No.: CTL1807316011-R

Date: Aug. 06, 2018

Page 6 of 10

Photographs of Sample:



Shenzhen CTL Testing Technology Co., Ltd.

Floor 1-A, Baisha Technology Park, No.3011, Shahexi Road, Nanshan District, Shenzhen, China 518055

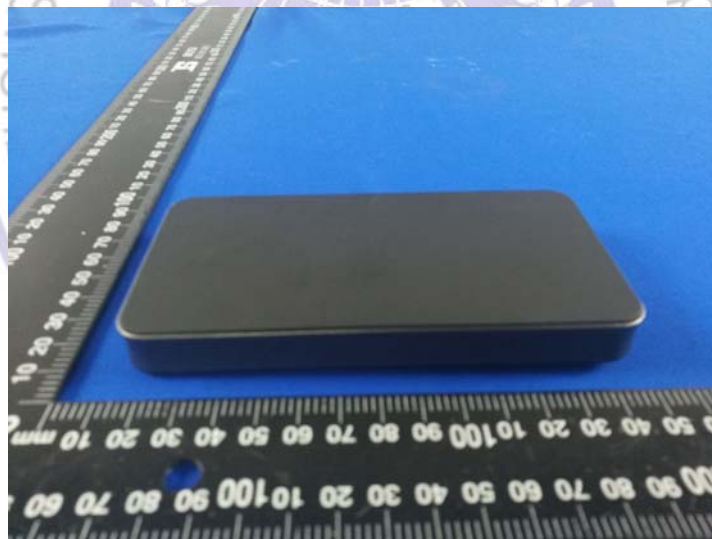
Tel: +86-755-89486194 E-Mail: ctl@ctl-lab.com

Test Report

No.: CTL1807316011-R

Date: Aug. 06, 2018

Page 7 of 10

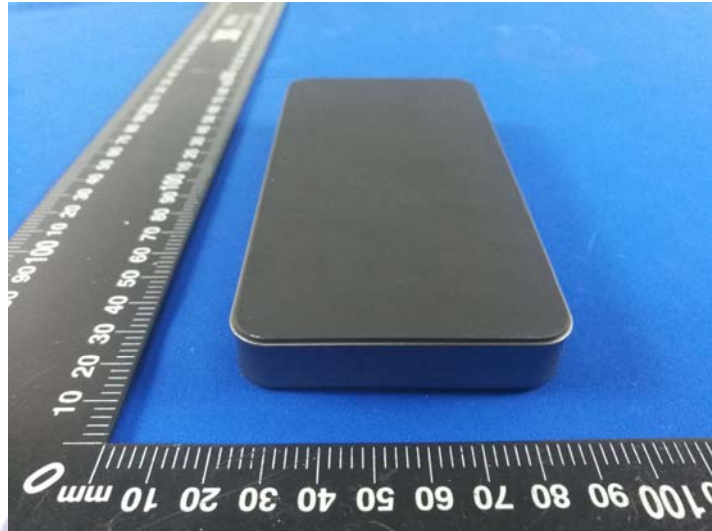


Test Report

No.: CTL1807316011-R

Date: Aug. 06, 2018

Page 8 of 10

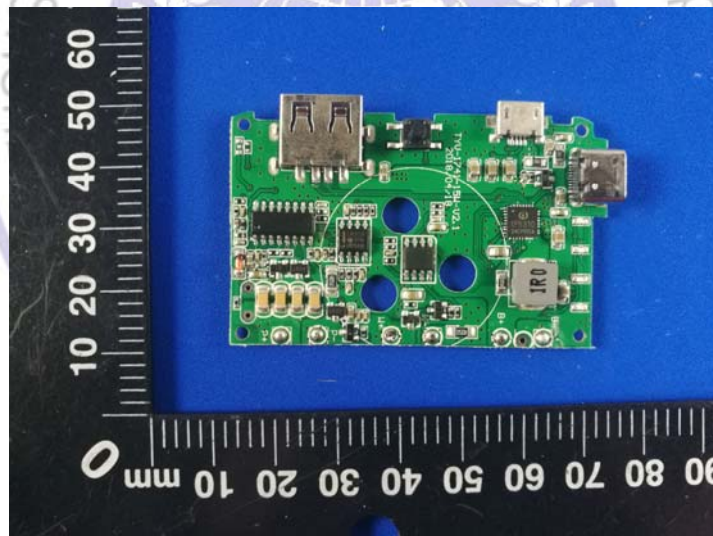
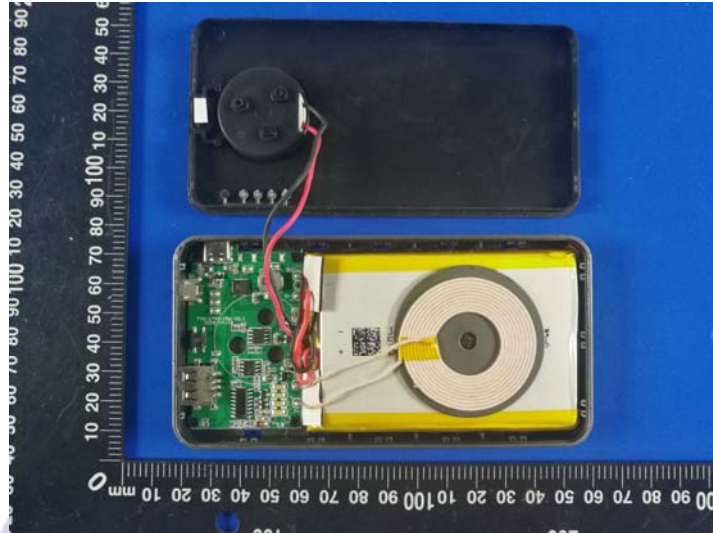


Test Report

No.: CTL1807316011-R

Date: Aug. 06, 2018

Page 9 of 10

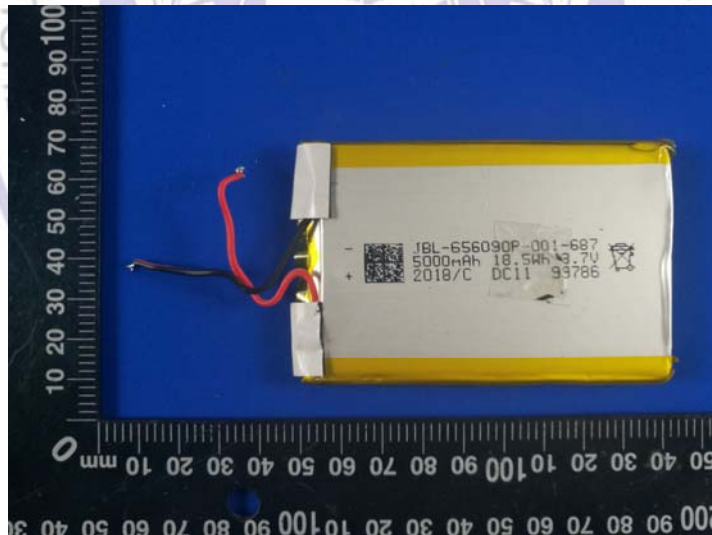
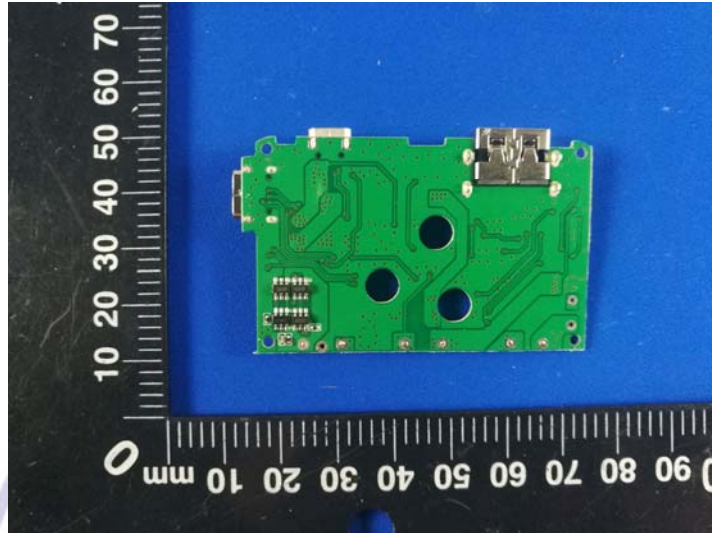


Test Report

No.: CTL1807316011-R

Date: Aug. 06, 2018

Page 10 of 10



..... End Of Report.....