

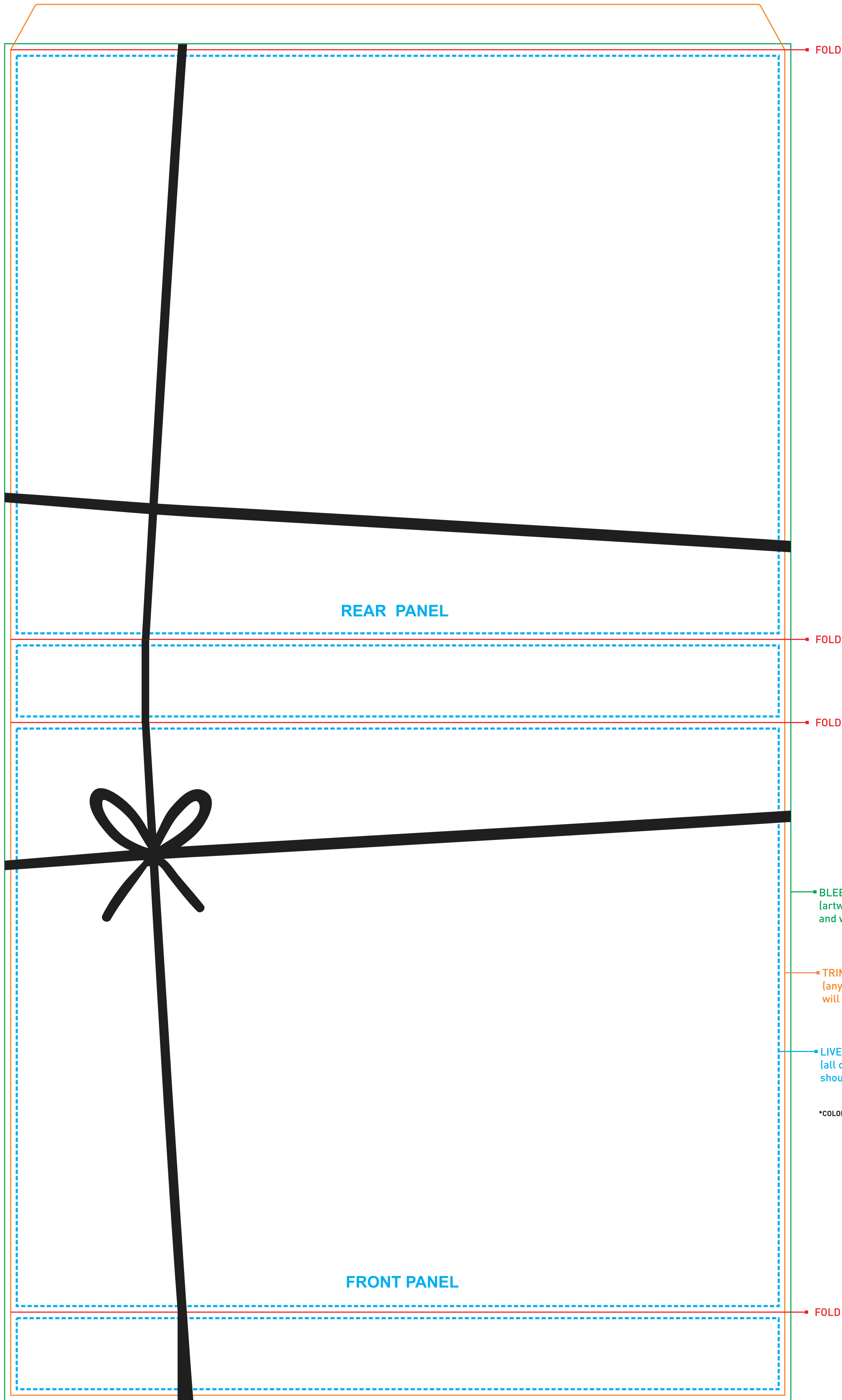
COMPATIBLE ITEM:


DEFAULT PATTERN

P521

S521 - Two Piece Gift Box Upgraded Sleeve

ARTWORK AT 100%



 Please note that the imprint color on this proof is approximate and the final printed color will vary due to the kraft colored paper.

ARTWORK SPECIFICATIONS

- Digital artwork **MUST** be sent in a high resolution PDF file (a separate file for each imprint) and should be in CMYK mode at a minimum resolution of 300 dpi sized at 100%.
- Please respect the parameters of this template and be advised that failure to provide artwork to the specifications listed above may result in production delays.
- **PLEASE REMOVE THIS STAMP AND ALL SPECIFICATION INFORMATION BEFORE SUBMITTING YOUR ARTWORK.**

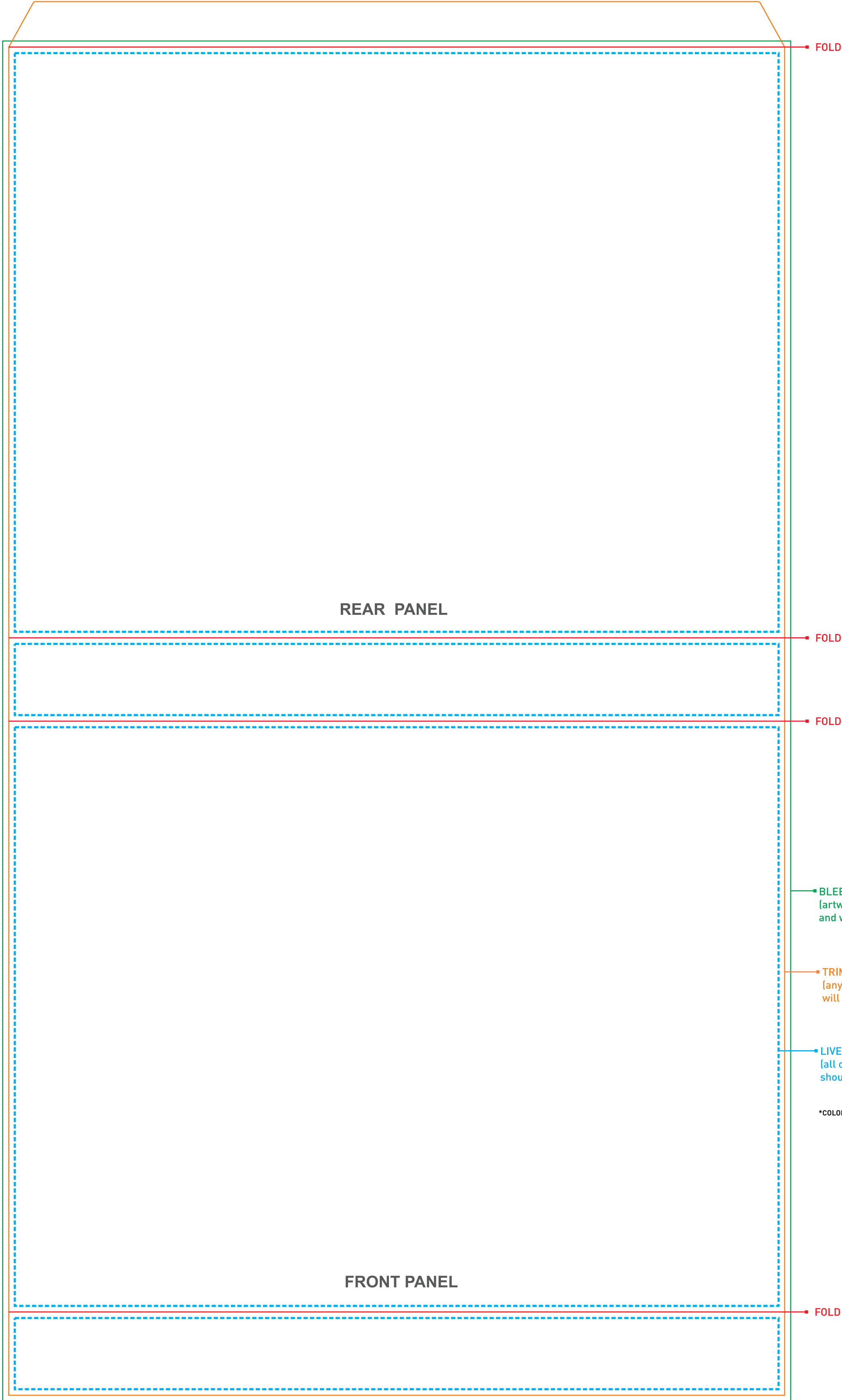
COMPATIBLE ITEM:

WITHOUT PATTERN

P521

S521 - Two Piece Gift Box Upgraded Sleeve

ARTWORK AT 100%



FOLD

REAR PANEL

FOLD

FOLD

BLEED LINE
(artwork should extend to this line and will be trimmed off)

TRIM LINE
(anything beyond this line will be trimmed)

LIVE AREA
(all crucial information should remain within this line)

*COLORED GUIDELINES WILL NOT BE PRINTED.

FOLD

FRONT PANEL

ARTWORK SPECIFICATIONS

- Digital artwork **MUST** be sent in a high resolution PDF file (a separate file for each imprint) and should be in CMYK mode at a minimum resolution of 300 dpi sized at 100%.
- Please respect the parameters of this template and be advised that failure to provide artwork to the specifications listed above may result in production delays.

PLEASE REMOVE THIS STAMP AND ALL SPECIFICATION INFORMATION BEFORE SUBMITTING YOUR ARTWORK.

 Please note that the imprint color on this proof is approximate and the final printed color will vary due to the kraft colored paper.