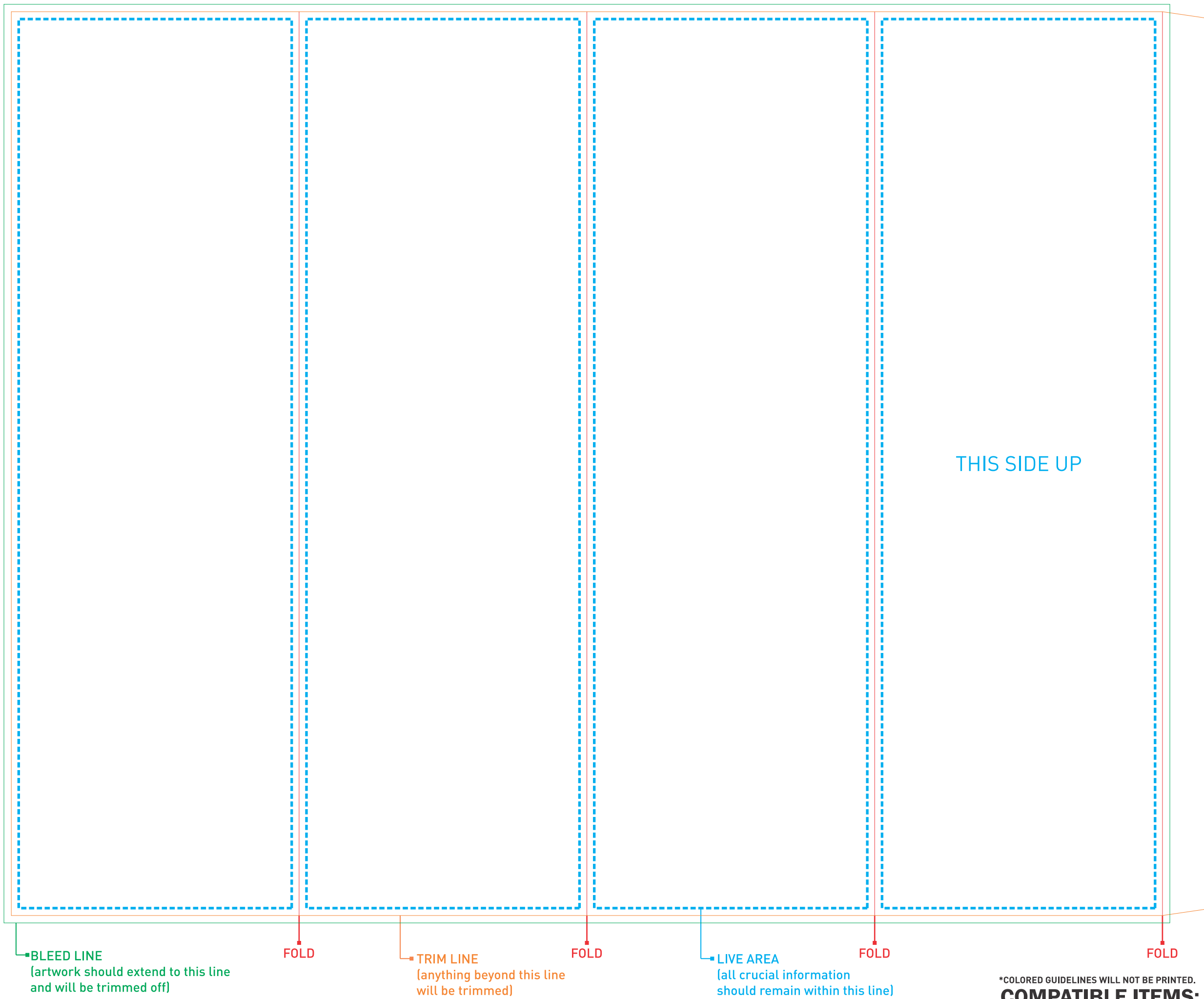


RINGLEADER SLEEVE - FULL
ARTWORK AT 100%



BLEED LINE
(artwork should extend to this line
and will be trimmed off)

FOLD

TRIM LINE
(anything beyond this line
will be trimmed)

FOLD

LIVE AREA
(all crucial information
should remain within this line)

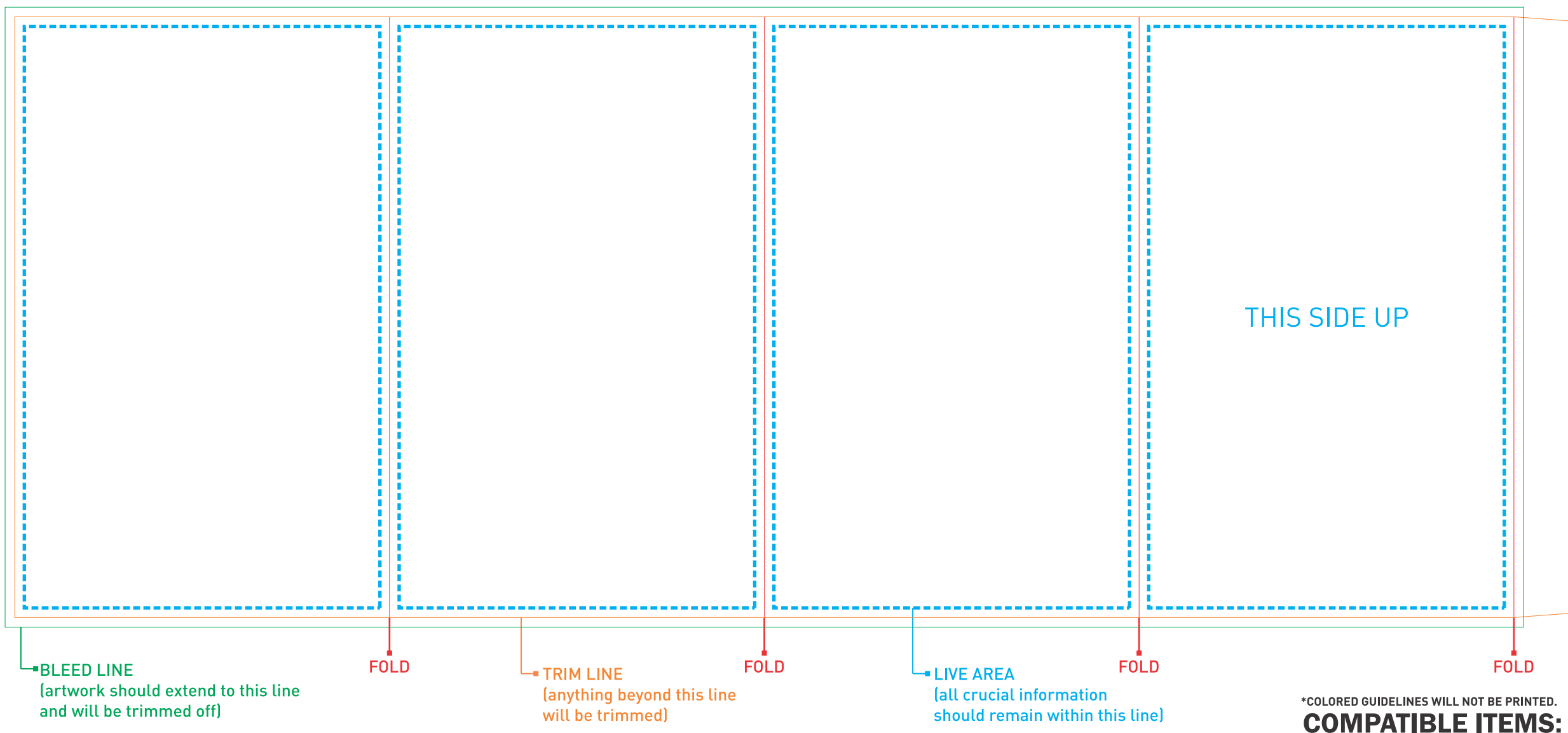
FOLD

FOLD

THIS SIDE UP

*COLORED GUIDELINES WILL NOT BE PRINTED.
COMPATIBLE ITEMS:
- DW310

RINGLEADER SLEEVE - HALF
ARTWORK AT 100%



BLEED LINE
(artwork should extend to this line
and will be trimmed off)

FOLD

TRIM LINE
(anything beyond this line
will be trimmed)

FOLD

LIVE AREA
(all crucial information
should remain within this line)

FOLD

FOLD

THIS SIDE UP

*COLORED GUIDELINES WILL NOT BE PRINTED.
COMPATIBLE ITEMS:
- DW310

ARTWORK SPECIFICATIONS

- Digital artwork **MUST** be sent in a high resolution PDF file (a separate file for each imprint) and should be in CMYK mode at a minimum resolution of 300 dpi sized at 100%.
- Please respect the parameters of this template and be advised that failure to provide artwork to the specifications listed above may result in production delays.
- **PLEASE REMOVE THIS STAMP AND ALL SPECIFICATION INFORMATION BEFORE SUBMITTING YOUR ARTWORK.**