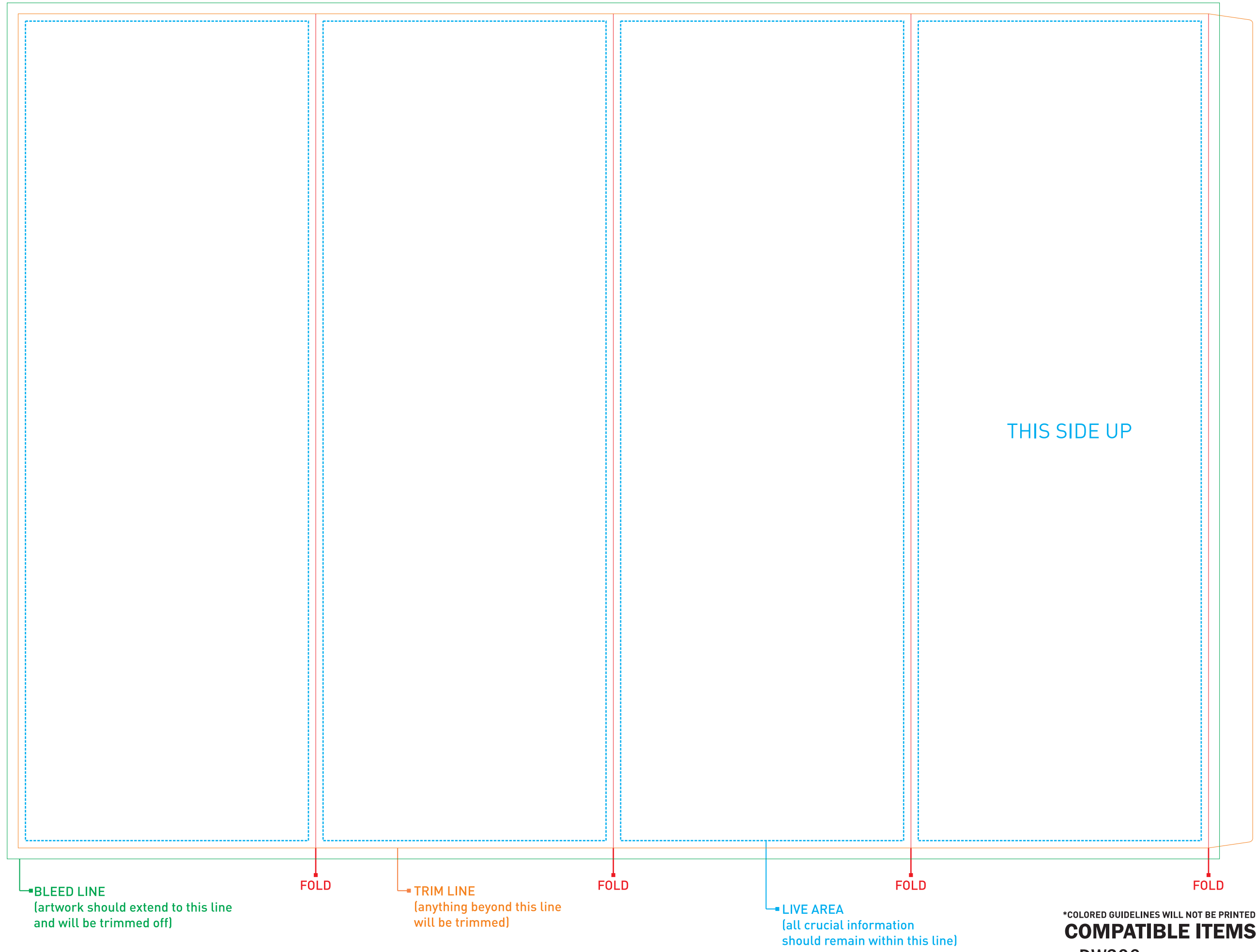
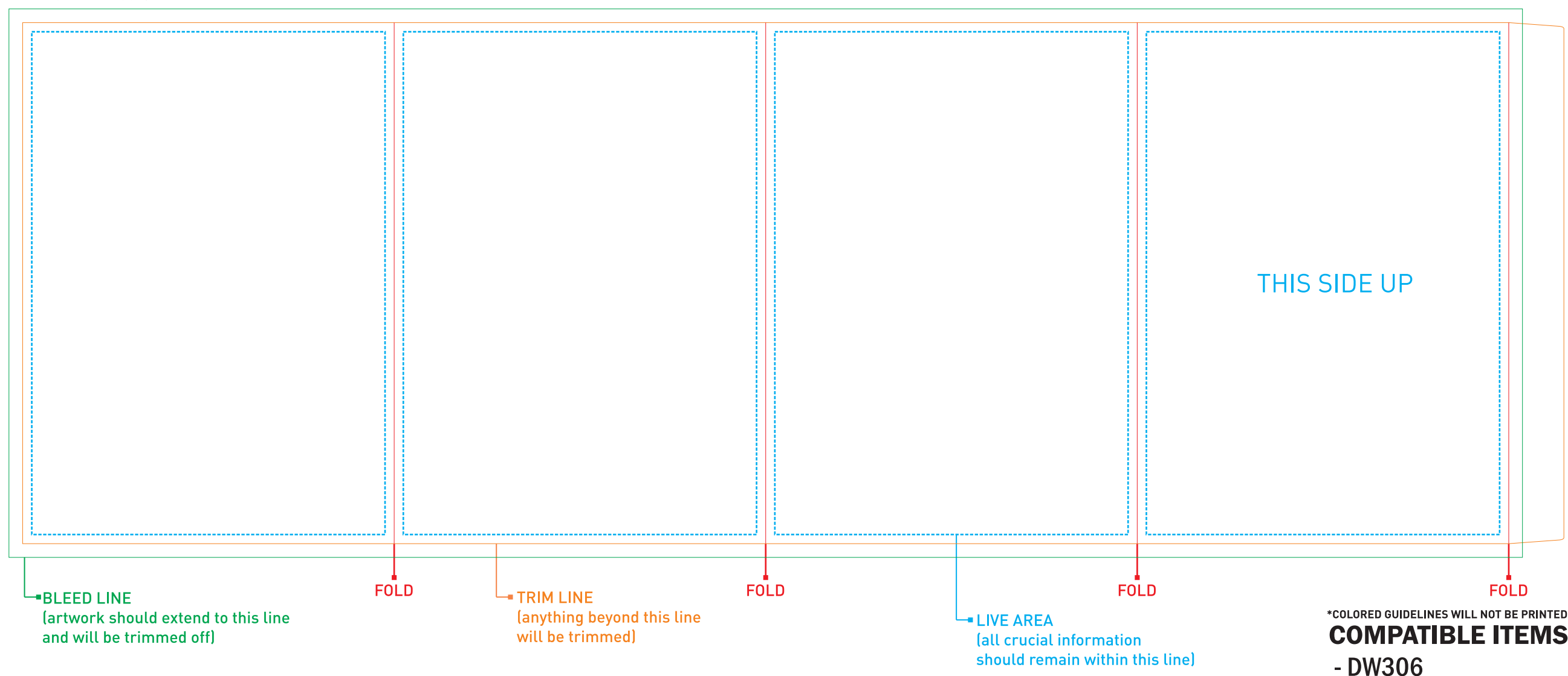


TOP NOTCH SLEEVE - FULL  
ARTWORK AT 100%



TOP NOTCH SLEEVE - HALF  
ARTWORK AT 100%



**ARTWORK SPECIFICATIONS**

- Digital artwork **MUST** be sent in a high resolution PDF file (a separate file for each imprint) and should be in CMYK mode at a minimum resolution of 300 dpi sized at 100%.
- Please respect the parameters of this template and be advised that failure to provide artwork to the specifications listed above may result in production delays.
- **PLEASE REMOVE THIS STAMP AND ALL SPECIFICATION INFORMATION BEFORE SUBMITTING YOUR ARTWORK.**