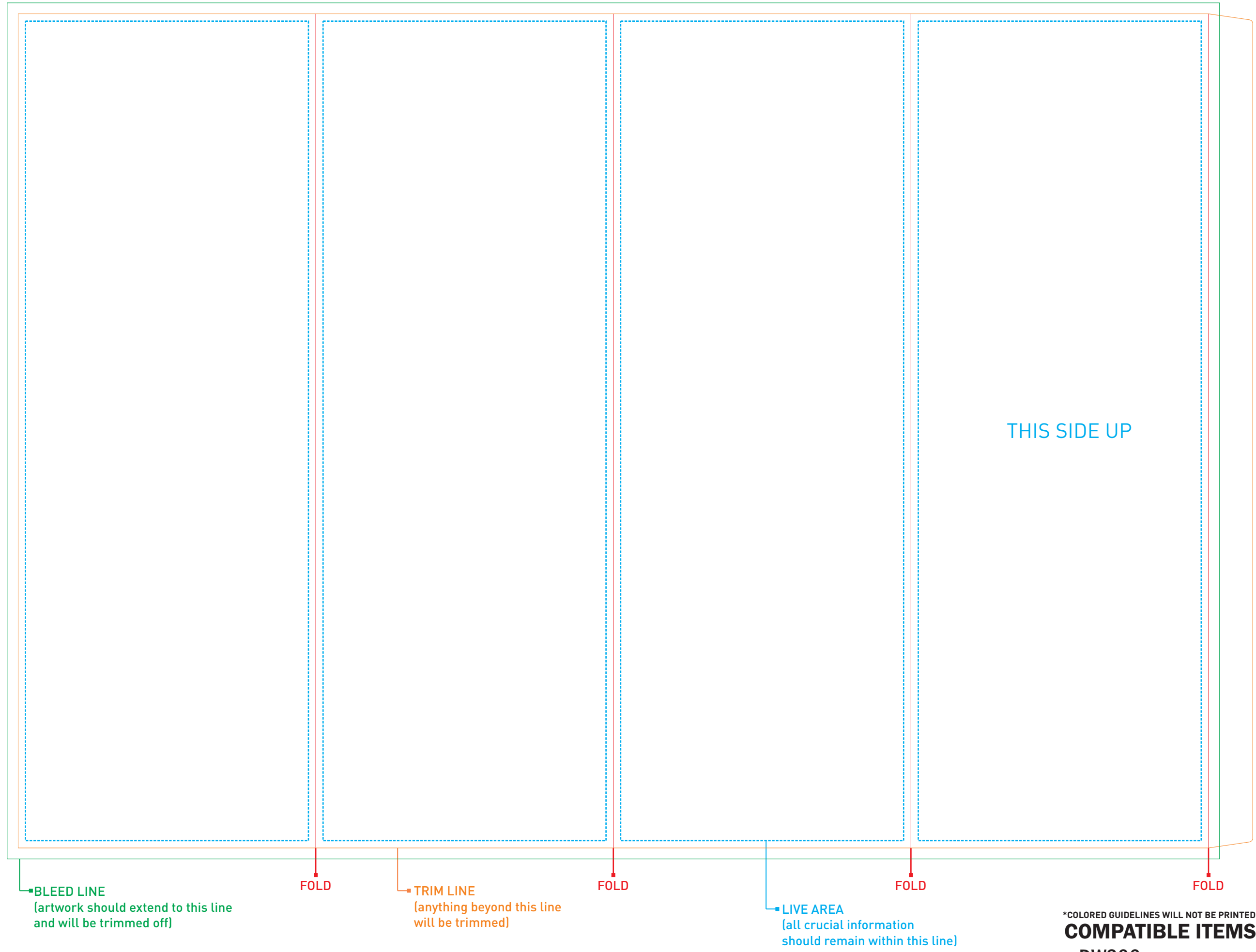
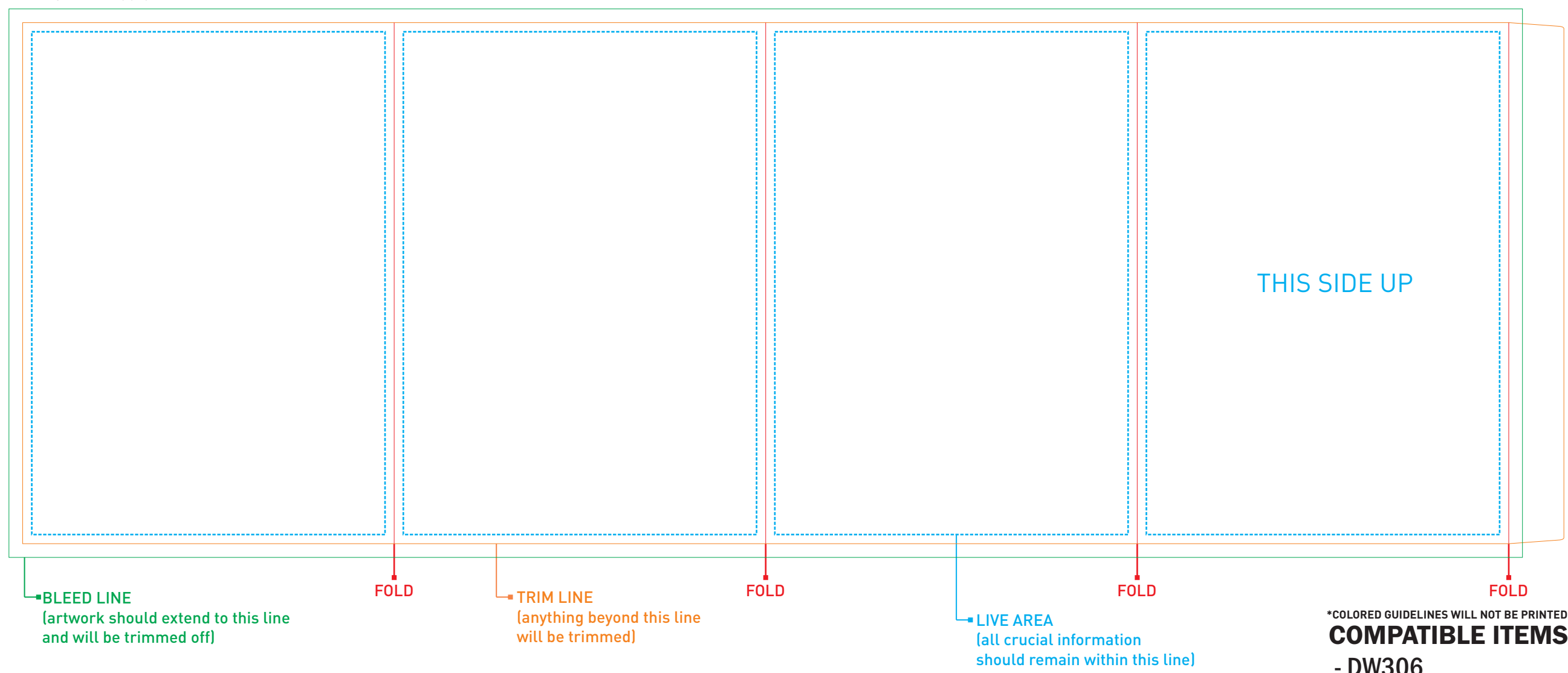


TOP NOTCH SLEEVE - FULL
ARTWORK AT 100%



*COLORED GUIDELINES WILL NOT BE PRINTED.
COMPATIBLE ITEMS:
- DW306
- DW319

TOP NOTCH SLEEVE - HALF
ARTWORK AT 100%



*COLORED GUIDELINES WILL NOT BE PRINTED.
COMPATIBLE ITEMS:
- DW306
- DW319

ARTWORK SPECIFICATIONS

- Digital artwork **MUST** be sent in a high resolution PDF file (a separate file for each imprint) and should be in CMYK mode at a minimum resolution of 300 dpi sized at 100%.
- Please respect the parameters of this template and be advised that failure to provide artwork to the specifications listed above may result in production delays.
- **PLEASE REMOVE THIS STAMP AND ALL SPECIFICATION INFORMATION BEFORE SUBMITTING YOUR ARTWORK.**