



# Test Report

No.: CTL1710236072-R

Date: Oct. 27, 2017

Page 1 of 8

**Applicant:** USU019

**Address:**

**Manufacturer:** shenzhen LDTEX technology co.ltd

**Address:** No 19th, building of Fenghuang Industrial area, Fenghuang Road, Pinghu Town, Bao'an district, Shenzhen

**Sample Name:** POWERBANK

**Model No:** T154

**Trade Mark:** Spector&co

**Test period:** Oct. 25, 2017 to Oct. 27, 2017

**Test requested:** RoHS Directive 2011/65/EU Annex II

**Test Method:** IEC 62321-7-2:2017method: Regulated Substances Content of test process with Electrical & Electronic Products

- (1)With reference to IEC 62321-5:2013, determination of Cadmium by ICP-OES.
- (2)With reference to IEC 62321-5:2013, determination of Lead by ICP-OES.
- (3)With reference to IEC 62321-4:2013, determination of Mercury by ICP-OES.
- (4)With reference to IEC 62321-7-2:2017, determination of Hexavalent Chromium by Colorimetric Method using UV-Vis.
- (5)With reference to IEC 62321-6:2015, determination of PBBs and PBDEs by GC-MS.

Written by:

*Aileen Zhan*

Approved by:

*Jacky Chen*

# Test Report

No.: CTL1710236072-R

Date: Oct. 27, 2017

Page 2 of 8

## Test Results:

Part No.	Part Name	Restricted Substances	Unit	Results	Reference report No.
1	Black plastic	Cd	mg/kg	N.D.	SGS Report No.: CANEC151003510
		Pb	mg/kg	N.D.	
		Hg	mg/kg	N.D.	
		Cr <sup>6+</sup>	mg/kg	N.D.	
		PBBs	mg/kg	N.D.	
		PBDEs	mg/kg	N.D.	
2	Black stainless steel	Cd	mg/kg	N.D.	SGS Report No.: GZ1507071502/CHEM
		Pb	mg/kg	N.D.	
		Hg	mg/kg	N.D.	
		Cr <sup>6+</sup>	mg/kg	N.D.	
		PBBs	mg/kg	N.D.	
		PBDEs	mg/kg	N.D.	
3	PCB	Cd	mg/kg	N.D.	SGS Report No.: CANEC1504517002
		Pb	mg/kg	N.D.	
		Hg	mg/kg	N.D.	
		Cr <sup>6+</sup>	mg/kg	N.D.	
		PBBs	mg/kg	N.D.	
		PBDEs	mg/kg	N.D.	
4	3M adhesive	Cd	mg/kg	N.D.	SGS Report No.: CE/2015/01710
		Pb	mg/kg	N.D.	
		Hg	mg/kg	N.D.	
		Cr <sup>6+</sup>	mg/kg	N.D.	
		PBBs	mg/kg	N.D.	
		PBDEs	mg/kg	N.D.	
5	Battery Cells	Cd	mg/kg	N.D.	SGS Report No.: CANEC1507024130
		Pb	mg/kg	N.D.	
		Hg	mg/kg	N.D.	
		Cr <sup>6+</sup>	mg/kg	N.D.	
		PBBs	mg/kg	N.D.	
		PBDEs	mg/kg	N.D.	

Shenzhen CTL Testing Technology Co., Ltd.

Floor 1-A, Baisha Technology Park, No.3011, Shahexi Road, Nanshan District, Shenzhen, China 518055

Tel: +86-755-89486194 E-Mail:ctl@ctl-lab.com Web: www.ctl-lab.com

# Test Report

No.: CTL1710236072-R

Date: Oct. 27, 2017

Page 3 of 8

6	USB plug	Cd	mg/kg	N.D.	SGS Report No.: CANEC1507024003
		Pb	mg/kg	N.D.	
		Hg	mg/kg	N.D.	
		Cr <sup>6+</sup>	mg/kg	N.D.	
		PBBs	mg/kg	N.D.	
		PBDEs	mg/kg	N.D.	
7	Glue	Cd	mg/kg	N.D.	SGS Report No.: SHAEC1500377301
		Pb	mg/kg	N.D.	
		Hg	mg/kg	N.D.	
		Cr <sup>6+</sup>	mg/kg	N.D.	
		PBBs	mg/kg	N.D.	
		PBDEs	mg/kg	N.D.	



# Test Report

No.: CTL1710236072-R

Date: Oct. 27, 2017

Page 4 of 8

## ROHS Requirement

Restricted substances	MDL	Limits
Lead(Pb)	5	0.1%(1000 ppm)
Cadmium(Cd)	5	0.01%(100 ppm)
Chromium(VI)(Cr6+)	5	0.1%(1000 ppm)
Mercury(Hg)	5	0.1%(1000 ppm)
Polybrominated biphenyls(PBBs)	5	0.1%(1000 ppm)
Polybrominated diphenyl ethers(PBDEs)	5	0.1%(1000 ppm)

### Note:

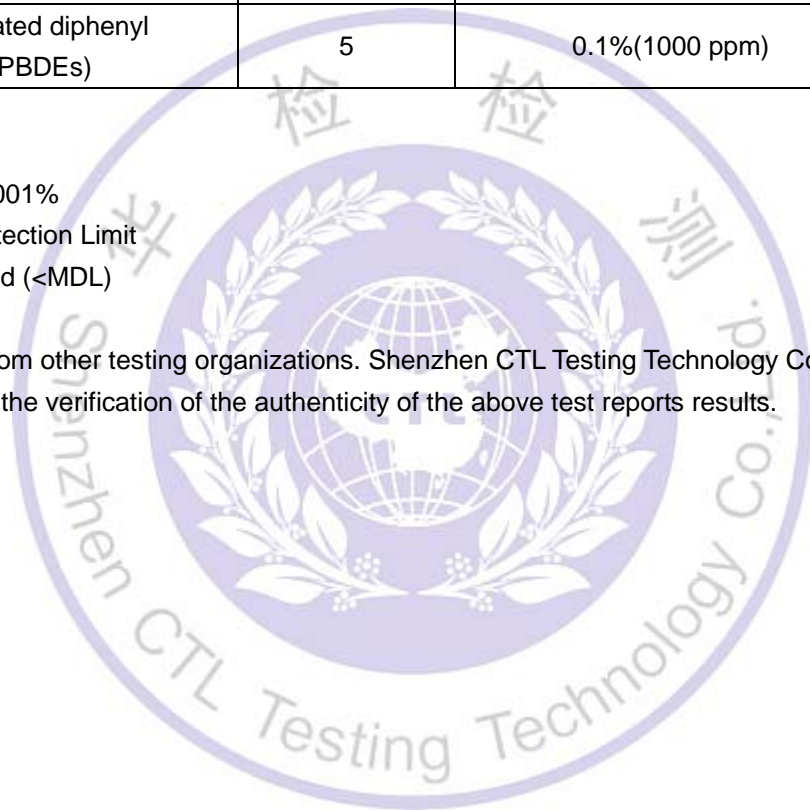
\_mg/kg=ppm=0.0001%

-MDL=Method Detection Limit

-N.D. =not detected (<MDL)

-Photo is included

-Test results are from other testing organizations. Shenzhen CTL Testing Technology Co., Ltd. has no liability to assume the verification of the authenticity of the above test reports results.



Shenzhen CTL Testing Technology Co., Ltd.

Floor 1-A, Baisha Technology Park, No.3011, Shahexi Road, Nanshan District, Shenzhen, China 518055

Tel: +86-755-89486194 E-Mail:ctl@ctl-lab.com Web: www.ctl-lab.com

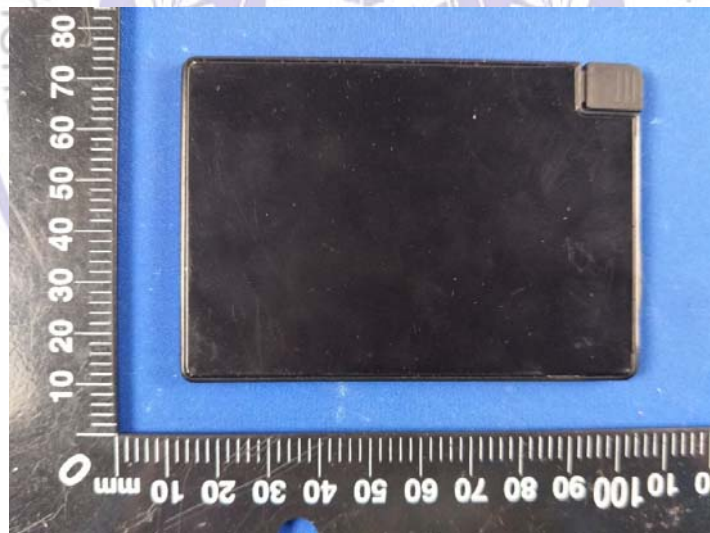
# Test Report

No.: CTL1710236072-R

Date: Oct. 27, 2017

Page 5 of 8

## Photographs of Sample:

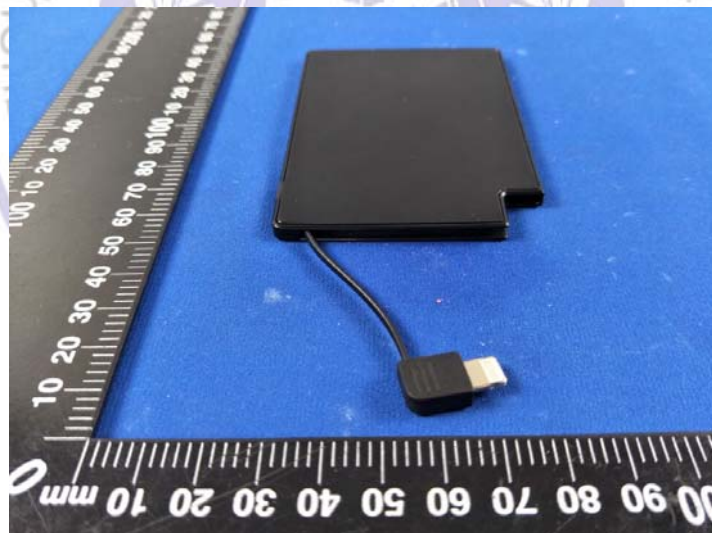


# Test Report

No.: CTL1710236072-R

Date: Oct. 27, 2017

Page 6 of 8



# Test Report

No.: CTL1710236072-R

Date: Oct. 27, 2017

Page 7 of 8



# Test Report

No.: CTL1710236072-R

Date: Oct. 27, 2017

Page 8 of 8

